

# 28 West 44th Street

between Fifth and Sixth Avenues

Bobrow  
Bobrow  
Bobrow

## PLUG & PLAY SUBLEASE NEAR GRAND CENTRAL & BRYANT PARK

As exclusive listing broker, we are pleased to offer the following office space for sublease:



- Space:** Partial 6th Floor
- Area:** 1,740 SF
- Term:** Through December 2018  
(Lease extension possible)
- Possession:** Immediate
- Rental:** Negotiable

- › 3 offices and a conference room with glass installation
- › Central A/C
- › Pantry
- › Furniture can be made available



Contact for more information:

**Michael Nazarian**  
Senior Director  
(212) 682-8771  
mnazarian@normanbobrow.com

**Daniel Yosef**  
Director  
(212) 682-9851  
dyosef@normanbobrow.com

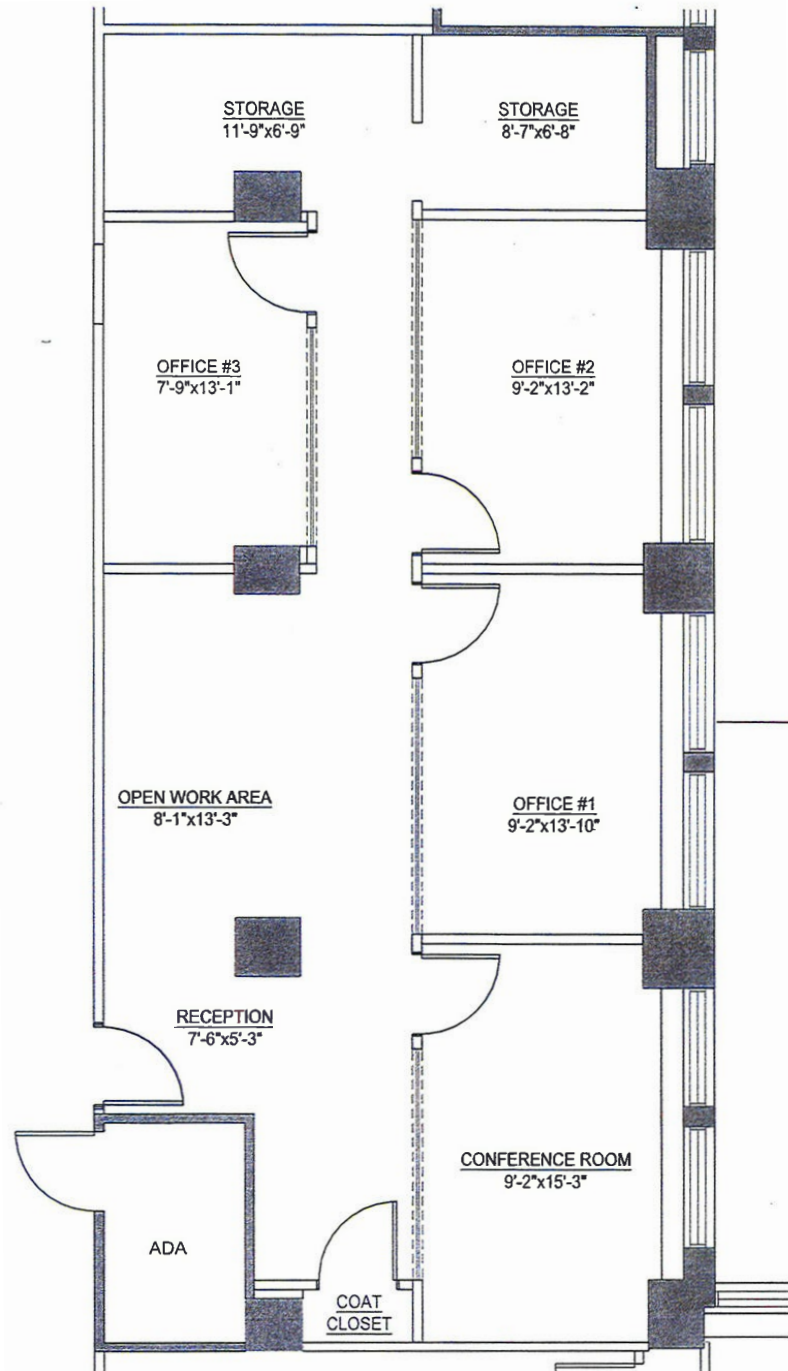
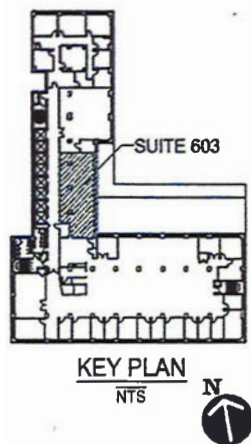
Norman Bobrow & Co. Inc.  
488 Madison Avenue, 19th Fl  
New York, NY 10022  
www.normanbobrow.com

Bobrow  
Bobrow  
Bobrow

# 28 West 44th Street

Bobrow  
Bobrow  
Bobrow

Partial 6th Floor  
1,740 SF  
Current Layout



Contact for more information:

**Michael Nazarian**  
Senior Director  
(212) 682-8771  
mnazarian@normanbobrow.com

**Daniel Yosef**  
Director  
(212) 682-9851  
dyosef@normanbobrow.com

Norman Bobrow & Co. Inc.  
488 Madison Avenue, 19th Fl  
New York, NY 10022  
www.normanbobrow.com

Bobrow  
Bobrow  
Bobrow